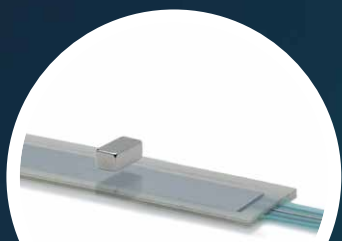
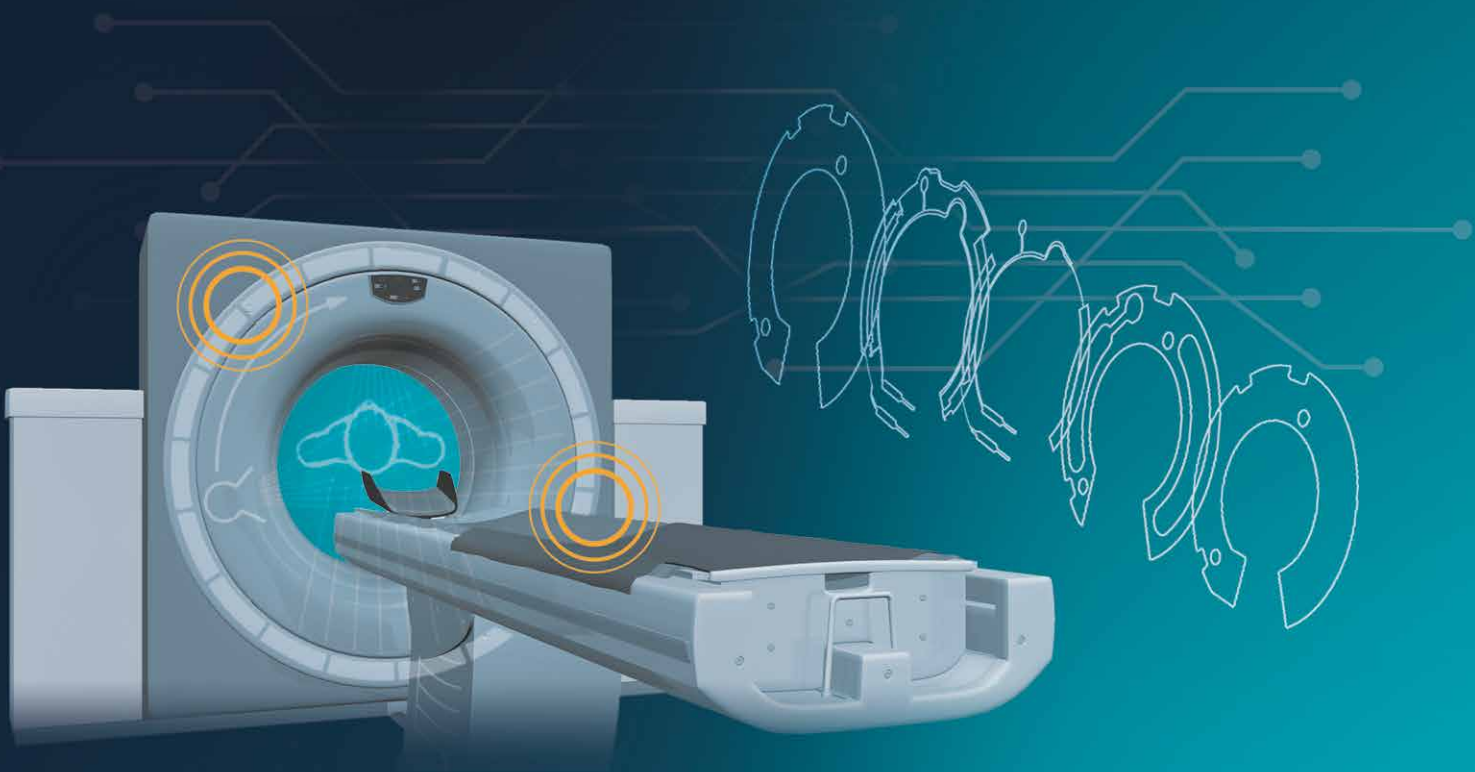


LINEAR AND ROTARY SENSORS

Product Range



▶ MMP



▶ WPL-0S linear



▶ HWL 60



▶ PE rotary

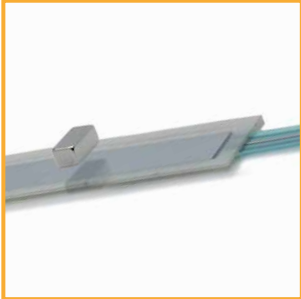
USA

FIRST IN SENSORS

metallux USA, Inc.

METALLUX – LINEAR- AND ROTARY SENSORS

MMP LINEAR MEMBRANE SENSOR CONTACTLESS, MAGNETIC

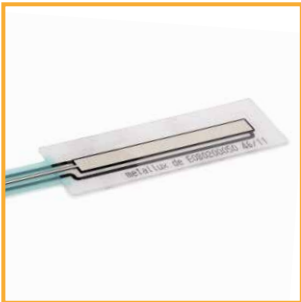


Dimensions with cable	Life time/Cycles	Operating temperature	Electrical distance/angle
Length: 123 – 573 mm Width: 22 mm	> 50 mio.	-25/+85 °C **	50 – 500 mm

Resistance range	Independent linearity	Voltage range	Technology
2.5 kΩ per 100 mm stroke	± 2 %	5 V, others on request	Magnetic membrane potentiometer

Special features: contactless, absolute sensor IP 65, easy to install, flat, customized design, ESD uncritically, EMC normally uncritically, minimal current demand, therefore ideally suited for battery-driven applications.

MTP MEMBRANE SENSOR LINEAR



Dimensions with cable	Life time/Cycles	Operating temperature	Electrical distance/angle
Length: 98 – 568 mm Width: 22 mm, smaller width on request	> 5 mio.	-25/+85 °C **	30 – 500 mm

Resistance range	Independent linearity	Voltage range	Technology
2.5 kΩ per 100 mm stroke	± 2 %	5 V, others on request	Membrane potentiometer

Special features: flat, sensor element IP 65, easy to install with self-adhesive tape, high life cycle, customized design, ESD uncritically, EMC uncritically, very low current demand

MTP-LX MEMBRANE SENSOR LINEARIZED ON FR4 BASE



Dimensions	Life time/Cycles	Operating temperature	Electrical distance/angle
Length: 124 – 574 mm Width: 21 mm	> 25 mio.	-25/+105 °C **	50 – 500 mm

Resistance range	Independent linearity	Voltage range	Technology
4 kΩ per 100 mm stroke	± 0.3 % **	5 V, others on request	Membrane potentiometer on FR4 substrate

Special features: linearized, sensor element IP 65, easy to install, high life cycle

MTP ROTARY MEMBRANE SENSOR ROTARY



Dimensions	Life time/Cycles	Operating temperature	Electrical distance/angle
Ø 40 – 200 mm, larger on request	> 5 mio.	-25/+85 °C	25° – 345°

Resistance range	Independent linearity	Voltage range	Axis diameter
2.5 kΩ per 90 °	± 2 %	5 V, others on request	Variable

Special features: flat, sensor element IP 65, easy to install with self-adhesive tape, high life cycle

METALLUX – LINEAR- AND ROTARY SENSORS

HMS 220 ROTARY HALL-TECHNOLOGY SENSOR



Dimensions	Life time/Cycles	Operating temperature	Electrical distance/angle
Ø 22.2 mm	> 10 mio.	-40/+85 °C **	0° – 360 freely programmable

Voltage range	Independent linearity	Axis diameter	Thread
0.5 – 4.5 volt at 5 V supply voltage, output signal: 10 – 90 %	± 0.5 %	6.0 mm	M 10 x 0.75

Special features: contactless, output programmable, IP 63, resolution 12 Bit, customized design, analog output or SPI-output

POH 120 POTENTIOMETER HALL-TECHNOLOGY



Dimensions	Life time/Cycles	Operating temperature	Electrical distance/angle
Ø 13 mm	> 200 mio.	-40/+85 °C **	0° – 360°

Voltage range	Independent linearity	Axis diameter
0.5 – 4.5 volt at 5 V supply voltage, output signal: 10 – 90 %	± 0.5 %	Decoupled 3 mm axis

Special features: contactless, no mechanical abrasion, output programmable, IP 65 with axis, IP 67 uncoupled unencumbered, resolution 12 Bit, customized design

POL 120 POTENTIOMETER CONDUCTIVE PLASTIC



Dimensions	Life time/Cycles	Operating temperature	Electrical distance/angle
Ø 13 mm	> 3 mio.	-25/+85 °C	308°*

Resistance range	Independent linearity	Axis diameter
10 kΩ *	± 2,5 %	3 mm

Special features: IP 65, easy assembly, long endurance, customized design possible, smallest dimensions

POL 220 POTENTIOMETER CONDUCTIVE PLASTIC



Dimensions	Life time/Cycles	Operating temperature	Electrical distance/angle
Ø 22.2 mm	> 10 mio.	-25/+85 °C	320°*

Resistance range	Independent linearity	Axis diameter	Thread
5 kΩ *	± 2 % *	6 mm	M 10 x 0.75

Special features: metal housing, high life cycle, with switching function, highest precision, customized design

METALLUX – LINEAR- AND ROTARY SENSORS

POL 230 POTENTIOMETER CONDUCTIVE PLASTIC, BALL BEARING



Dimensions	Life time/Cycles	Operating temperature	Electrical distance/angle
Ø 22.2 mm	> 20 mio.	-25 /+85 °C	340°*

Resistance range	Independent linearity	Axis diameter
5 kΩ*	± 2%*	3 mm

Special features: metal-housing 2 x ball bearing, with switching function, highest precision, IP 63

POL 790 POTENTIOMETER CONDUCTIVE PLASTIC, ROBUST



Dimensions	Life time/Cycles	Operating temperature	Electrical distance/angle
Ø 79 mm	> 10 mio.	-25 /+85 °C	355°*

Resistance range	Independent linearity	
5 kΩ**	± 2%*	

Special features: robust versions, highest precision, customized design, IP 67, connector type: M 12 x 1, 4-pole

POL 200 POTENTIOMETER CONDUCTIVE PLASTIC



Dimensions	Life time/Cycles	Operating temperature	Electrical distance/angle
Ø 20 mm	> 1 mio.	-25 /+85 °C	320°*

Resistance range	Independent linearity	Axis diameter
10 kΩ*	± 2%	6 mm*

Special features: Plastic housing, variable rotation angle, special axes, precision in small dimensions and cost-efficient, IP 50

WPL-LH LINEAR POTENTIOMETRIC POSITION SENSOR – CONDUCTIVE PLASTIC



Dimensions	Life time/Cycles	Operating temperature	Electrical distance/angle
Length: 74 – 362 mm Ø 16 mm	> 5 mio.	-25 /+85 °C, extended temperature on request	25 mm up to 300 mm

Resistance range	Independent linearity	Technology
10 kΩ – 21 kΩ	± 2%	Conductive plastic

Special features: aluminium housing, IP 63, ball coupling, double bearing, cable, plug connection optional

* other values on request, ** limited performance data subject to temperature and assembly conditions

METALLUX – LINEAR- AND ROTARY SENSORS

WPL-05

POTENTIOMETRIC POSITION SENSOR – CONDUCTIVE PLASTIC



Dimensions	Life time/Cycles	Operating temperature	Electrical distance/angle
Length: 145 mm Width: 20 mm	> 10 mio.	-25 /+85 °C	105 mm (others on request)

Resistance range	Independent linearity	Technology
5 k Ω	Linearized $\pm 0.25\%$ *	Conductive plastic

Special features: space saving (without plunger), little installation space required, flexible, precise, customized design

HWL 60

POTENTIOMETER CONDUCTIVE PLASTIC – HOLLOW SHAFT



Dimensions	Life time/Cycles	Operating temperature	Electrical distance/angle
32 x 30 mm	> 3 mio.	-25 /+85 °C	320° *

Resistance range	Independent linearity	Axis diameter
10 k Ω *	$\pm 2\%$	Hollow shaft \varnothing 5 mm

Special features: plastic housing, hollow shaft, floating mounting, numerous applications, IP 50

PE LINEAR

POTENTIOMETER-ELEMENT FOR POSITION SENSING



Dimensions	Life time/Cycles	Operating temperature	Electrical distance/angle
Length: 45 – 525 mm Width: 10 mm*	> 50 mio.	-40 /+125 °C	20 – 500 mm

Resistance range	Independent linearity	Technology
5 k Ω *	< $\pm 2\%$ *	Conductive plastic

Special features: optional linearity $\pm 0.25\%$, customized design as from 500 units, different substrates possible

PE ROTARY

POTENTIOMETER-ELEMENT FOR ANGLE SENSING



Dimensions	Life time/Cycles	Operating temperature	Electrical distance/angle
\varnothing 13 – 200 mm, bigger on request	> 50 mio.	-40 /+125 °C **	25° – 355° *

Resistance range	Independent linearity	Technology
5 k Ω *	$\pm 2\%$	Conductive plastic

Special features: optional linearity $\pm 0.25\%$, customized design as from 500 units

www.metallux-usa.com

Specifications are subject to change without notice.
© www.metallux.de 06/2020



METALLUX USA, INC.

2340 Brighton Henrietta
Town Line Road, Suite 4
Rochester, NY 14623 | USA

PHONE: +1 (585)360 - 0054
FAX: +1 (866)429 - 0360
E-mail: info@metallux-usa.com

System Certification
to ISO 9001:2015